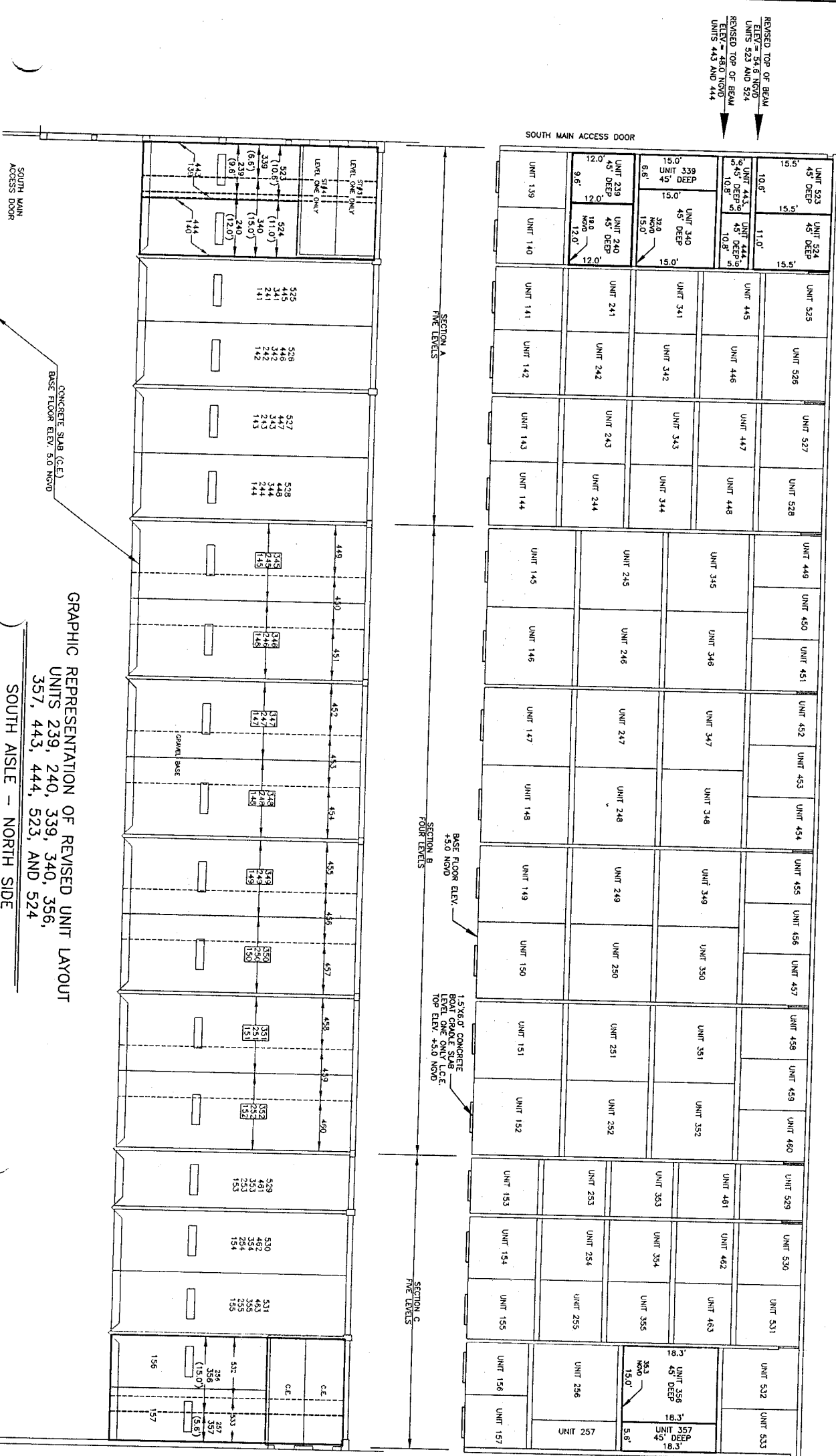


DATE	PROJECT NO.	DRAWN BY	SCALE	SHEET	FILE NO. (S-N)
02-17-07	37986	J.R.C.	1" = 20'	1 OF 3	9-46-23

ANNEXED TO AND EXPRESSLY MADE A PART OF EXHIBIT "D" OF THE DECLARATION OF CONDOMINIUM FOR SANIBEL HARBOUR YACHT CLUB, A CONDOMINIUM LOCATED IN SECTION 9, TOWNSHIP 46 SOUTH, RANGE 23 EAST, LEE COUNTY, FLORIDA FILED FOR RECORD IN INSTRUMENT NUMBER 2006000142556 OF THE PUBLIC RECORDS OF LEE COUNTY, FLORIDA

AMENDMENT NUMBER TWO TO REVISE THE UNIT BOUNDARIES OF UNITS 237, 238, 239, 240, 337, 338, 339, 340, 356, 357, 439, 440, 443, 444, 523, AND 524 AND TO ELIMINATE UNITS 464, 465, 519 AND 520



REVISED TOP OF BEAM ELEV. = 54.6' NGVD
UNITS 523 AND 524
REVISED TOP OF BEAM ELEV. = 48.0' NGVD
UNITS 443 AND 444

SECTION A
FIVE LEVELS

SECTION B
FOUR LEVELS

SECTION C
FIVE LEVELS

SOUTH MAIN ACCESS DOOR

CONCRETE SLAB (C.E.)
BASE FLOOR ELEV. 5.0' NGVD

1.5" YEOL' CONCRETE BOAT GRADLE SLAB LEVEL ONE ONLY L.C.E. TOP ELEV. +5.0' NGVD

ELIMINATED BEAM
UNITS 464 & 465



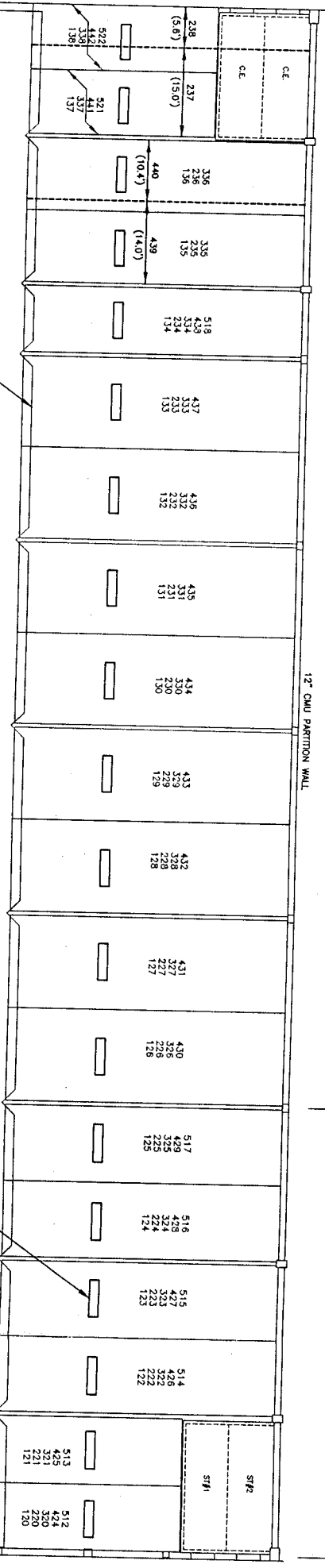
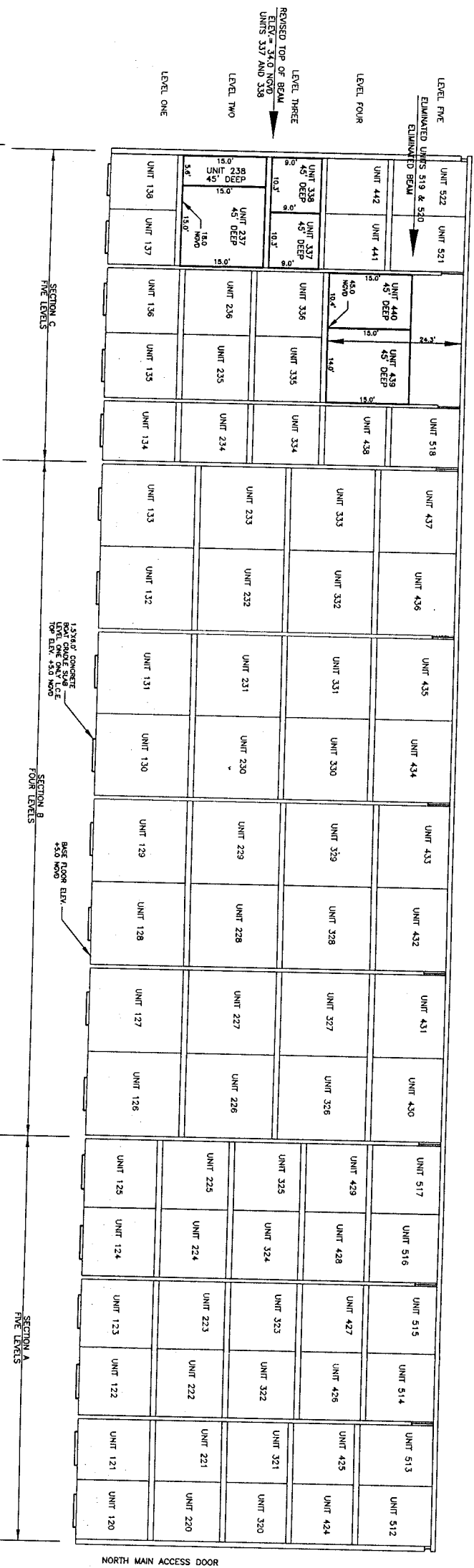
GRAPHIC REPRESENTATION OF REVISED UNIT LAYOUT
UNITS 239, 240, 339, 340, 356, 357, 443, 444, 523, AND 524

SOUTH AISLE - NORTH SIDE

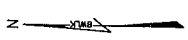
PROJECT NO.	02-17-07	DRAWN BY	J.R.C.	SCALE	1" = 20'	SHEET	2 OF 3	REV. NO. (S-T-R)	9-46-23
PROJECT NAME	South Aisle - North - Amendment 02-2.dwg								

ANNEXED TO AND EXPRESSLY MADE A PART OF EXHIBIT "D" OF THE DECLARATION OF CONDOMINIUM FOR SANIBEL HARBOUR YACHT CLUB, A CONDOMINIUM LOCATED IN SECTION 9, TOWNSHIP 46 SOUTH, RANGE 23 EAST, LEE COUNTY, FLORIDA FILED FOR RECORD IN INSTRUMENT NUMBER 2006000142556 OF THE PUBLIC RECORDS OF LEE COUNTY, FLORIDA

AMENDMENT NUMBER TWO TO REVISE THE UNIT BOUNDARIES OF UNITS 237, 238, 239, 240, 337, 338, 339, 340, 356, 357, 439, 440, 443, 444, 523, AND 524 AND TO ELIMINATE UNITS 464, 465, 519 AND 520



GRAPHIC REPRESENTATION OF REVISED UNIT LAYOUT
 UNITS 237, 238, 337, 338, 439 AND 440
 NORTH AISLE - SOUTH SIDE



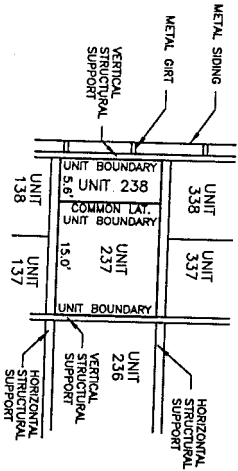
DATE	PROJECT NO.	DRAWN BY	SCALE	SHEET	FILE NO.
02-17-07	37986	J.R.C.	1" = 20'	3 OF 3	9-46-23

EXHIBIT "D-2"

ANNEXED TO AND EXPRESSLY MADE A PART OF EXHIBIT "D" OF THE DECLARATION OF CONDOMINIUM FOR SANIBEL HARBOUR YACHT CLUB, A CONDOMINIUM LOCATED IN SECTION 9, TOWNSHIP 46 SOUTH, RANGE 23 EAST, LEE COUNTY, FLORIDA FILED FOR RECORD IN INSTRUMENT NUMBER 2006000142556 OF THE PUBLIC RECORDS OF LEE COUNTY, FLORIDA

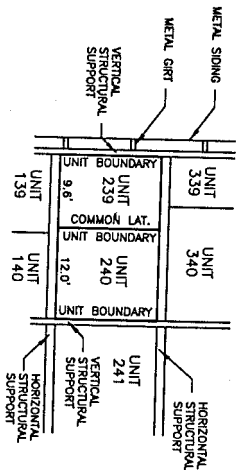
AMENDMENT NUMBER TWO TO REVISE THE UNIT BOUNDARIES OF UNITS 237, 238, 239, 240, 337, 338, 339, 340, 356, 357, 439, 440, 443, 444, 523, AND 524 AND TO ELIMINATE UNITS 464, 465, 519 AND 520

REVISED COMMON LATERAL UNIT BOUNDARY UNIT 237 AND UNIT 238



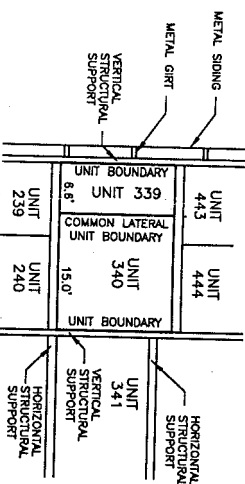
AMENDMENT NUMBER TWO
COMMON LATERAL UNIT BOUNDARIES:
UNITS 237 AND 238 ONLY:
A VERTICAL PLANE PARALLEL WITH AND 15.0 FEET EAST OF THE VERTICAL PLANE OF THE INSIDE (WITH RESPECT TO UNIT 237) SURFACE OF THE VERTICAL STRUCTURAL SUPPORT BETWEEN UNIT 238 AND UNIT 237, EXTENDED TO THE PLANNER INTERSECTION WITH THE UPPER, LOWER, FORWARD AND AFT UNIT BOUNDARIES.

REVISED COMMON LATERAL UNIT BOUNDARY UNIT 239 AND UNIT 240



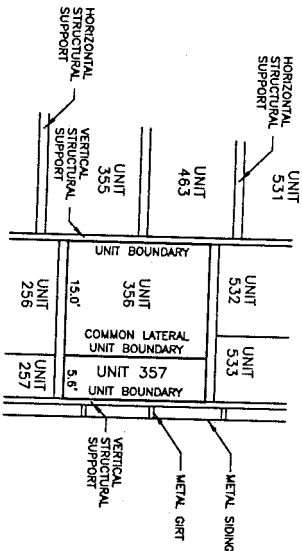
AMENDMENT NUMBER TWO
COMMON LATERAL UNIT BOUNDARIES:
UNITS 239 AND 240 ONLY:
A VERTICAL PLANE PARALLEL WITH AND 12.0 FEET WEST OF THE VERTICAL PLANE OF THE INSIDE (WITH RESPECT TO UNIT 240) SURFACE OF THE VERTICAL STRUCTURAL SUPPORT BETWEEN UNIT 240 AND UNIT 239, EXTENDED TO THE PLANNER INTERSECTION WITH THE UPPER, LOWER, FORWARD AND AFT UNIT BOUNDARIES.

REVISED COMMON LATERAL UNIT BOUNDARY UNIT 339 AND UNIT 340



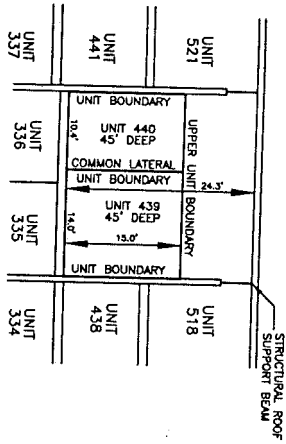
AMENDMENT NUMBER TWO
COMMON LATERAL UNIT BOUNDARIES:
UNITS 339 AND 340 ONLY:
A VERTICAL PLANE PARALLEL WITH AND 15.0 FEET WEST OF THE VERTICAL PLANE OF THE INSIDE (WITH RESPECT TO UNIT 340) SURFACE OF THE VERTICAL STRUCTURAL SUPPORT BETWEEN UNIT 340 AND UNIT 339, EXTENDED TO THE PLANNER INTERSECTION WITH THE UPPER, LOWER, FORWARD AND AFT UNIT BOUNDARIES.

REVISED COMMON LATERAL UNIT BOUNDARY UNIT 356 AND UNIT 357



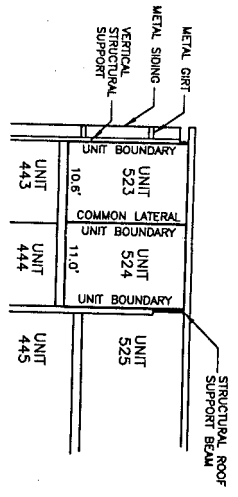
AMENDMENT NUMBER TWO
COMMON LATERAL UNIT BOUNDARIES:
UNITS 356 AND 357 ONLY:
A VERTICAL PLANE PARALLEL WITH AND 15.0 FEET EAST OF THE VERTICAL PLANE OF THE INSIDE (WITH RESPECT TO UNIT 356) SURFACE OF THE VERTICAL STRUCTURAL SUPPORT BETWEEN UNIT 356 AND UNIT 357, EXTENDED TO THE PLANNER INTERSECTION WITH THE UPPER, LOWER, FORWARD AND AFT UNIT BOUNDARIES.

REVISED COMMON LATERAL UNIT BOUNDARY UNIT 439 AND UNIT 440



AMENDMENT NUMBER TWO
COMMON LATERAL UNIT BOUNDARIES:
UNITS 439 AND 440 ONLY:
A VERTICAL PLANE PARALLEL WITH AND 14.0 FEET EAST OF THE VERTICAL PLANE OF THE INSIDE (WITH RESPECT TO UNIT 439) SURFACE OF THE VERTICAL STRUCTURAL SUPPORT BETWEEN UNIT 439 AND UNIT 439, EXTENDED TO THE PLANNER INTERSECTION WITH THE UPPER, LOWER, FORWARD AND AFT UNIT BOUNDARIES.

REVISED COMMON LATERAL UNIT BOUNDARY UNIT 523 AND UNIT 524



AMENDMENT NUMBER TWO
COMMON LATERAL UNIT BOUNDARIES:
UNITS 523 AND 524 ONLY:
A VERTICAL PLANE PARALLEL WITH AND 11.0 FEET WEST OF THE VERTICAL PLANE OF THE INSIDE (WITH RESPECT TO UNIT 524) SURFACE OF THE VERTICAL STRUCTURAL SUPPORT BETWEEN UNIT 524 AND UNIT 523, EXTENDED TO THE PLANNER INTERSECTION WITH THE UPPER, LOWER, FORWARD AND AFT UNIT BOUNDARIES.